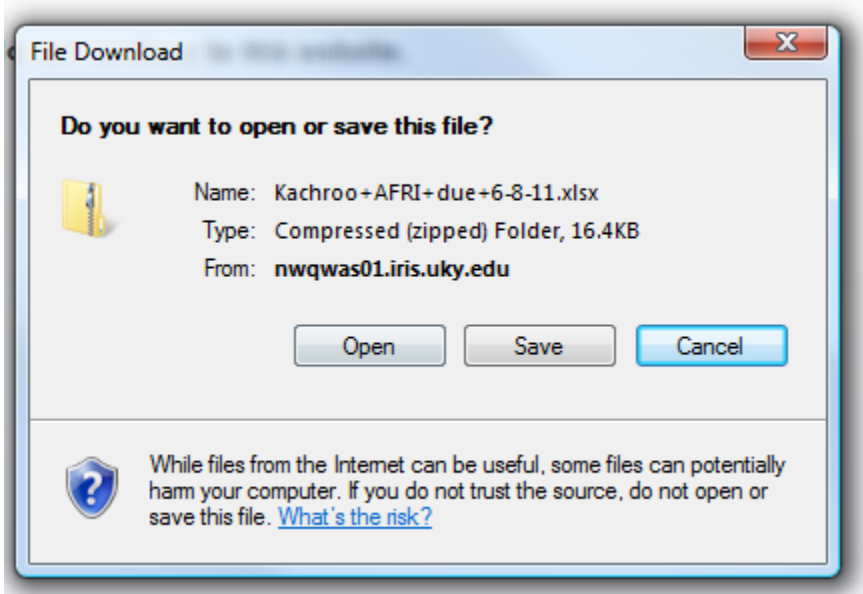


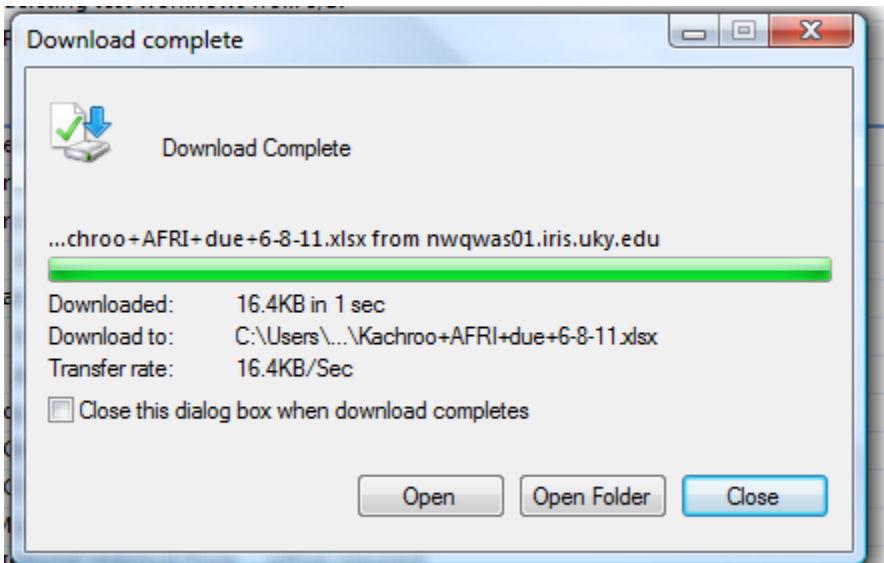
## Opening an Excel File

Here are the steps he will need to follow for excel documents when he runs into this problem. This is often caused by formulas or macros in the excel form.

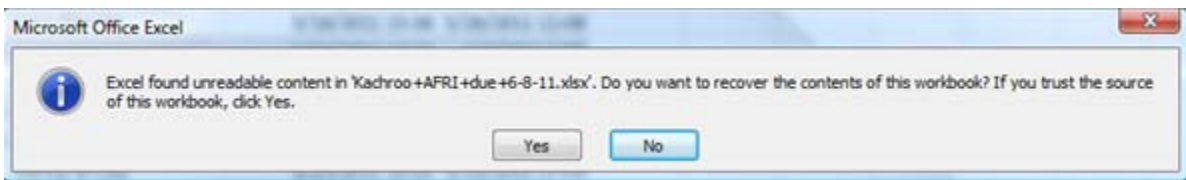
- 1) When prompted, save the file



- 2) When the save is complete, click to Open the file



- 3) Click Yes to recover the file



4) The file should open, then click to close the pop-up window

4 Year Grant		Year 1 (2011-2012)				
	% Effort Charged to Project	% Effort Cost Shared	Institutional Base Salary	Salary Requested	Fringe Benefits	Total Requested from Sponsor
	8%	0%	\$67,027	\$5,362	\$2,039	\$7,401
	6.5%	0%	\$34,827	\$2,264	\$1,176	\$3,440
Post Doc	100%	0%	\$30,000	\$30,000	\$12,669	\$42,669
Graduate Student	100%	0%	\$18,000	\$18,000	\$2,639	\$20,639
Undergraduate Students*	100%	0%	\$7,500	\$7,500	\$641	\$8,141
Total Personnel				\$63,126	\$19,164	\$82,290
Equipment						\$20,000
Supplies						\$4,106
Travel						\$1,500
Publication						\$0
Other						\$0
Hazardous Waste						\$239
Tuition						\$10,300
Total						\$118,435
Indirect						\$33,405
Total						\$151,840
						direct calculations \$88,135
						ton and equipment
						nt; 3.6% Miscellaneous)
						nt; 3.7% Miscellaneous)
Graduate Student, Post Doc, Temp Fringe	8.55%	(7.65% FICA; 1% Miscellaneous)				

Repairs to 'Kachroo+AFRI+due+6-8-11.xlsx'

Excel was able to open the file by repairing or removing the unreadable content.

Excel completed file level validation and repair. Some parts of this workbook may have been repaired or discarded.

Click to view log file listing repairs: [C:\Users\kcrouch\AppData\Local\Temp\error055680\\_03.xml](C:\Users\kcrouch\AppData\Local\Temp\error055680_03.xml)

Close