

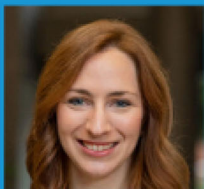
LEARN BY DOING:

HOW TO APPROACH A FACULTY RESEARCH MENTOR

JUNE 17, 2020 AT 4 P.M.

Looking for ways to stay connected this summer? Join the Chellgren Center, Office of Nationally Competitive Awards and Office of Undergraduate Research for a faculty panel on how to seek out a research mentor and be productive toward your academic goals even under the conditions dictated by the COVID-19 pandemic.

Register here: tinyurl.com/chellgrenresearch



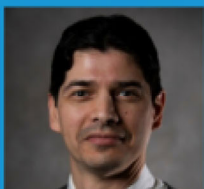
DR. FANNY CHAPELIN is a Research Assistant Professor in the Department of Biomedical Engineering in the College of Engineering. Her lab develops non-invasive magnetic resonance imaging (MRI) methods to track immune cell migration to foci of inflammation in different pathologies such as transplant rejection, autoimmune diseases and cancer.



DR. MICHAEL KILGORE is an Associate Professor in the Department of Pharmacology & Nutritional Sciences in the College of Medicine. His lab has made key discoveries involving the role of PPAR γ 1 in cancer including its overexpression in breast, ovarian, lung and prostate cancer.



DR. PHILIPP KRAEMER is a Professor in the Department of Psychology in the College of Arts and Sciences and the Chellgren Endowed Chair for Undergraduate Excellence. His research has focused on an array of issues in cognitive science and philosophy of mind with applications to education and the psychology of innovation.



DR. EDUARDO SANTILLAN-JIMENEZ is a Principal Research Scientist at the UK Center for Applied Energy Research (CAER). His current research focuses on the application of heterogeneous catalysis to the production of renewable fuels and chemicals, with emphasis on the upgrading of biomass-derived oils to drop-in hydrocarbon fuels.