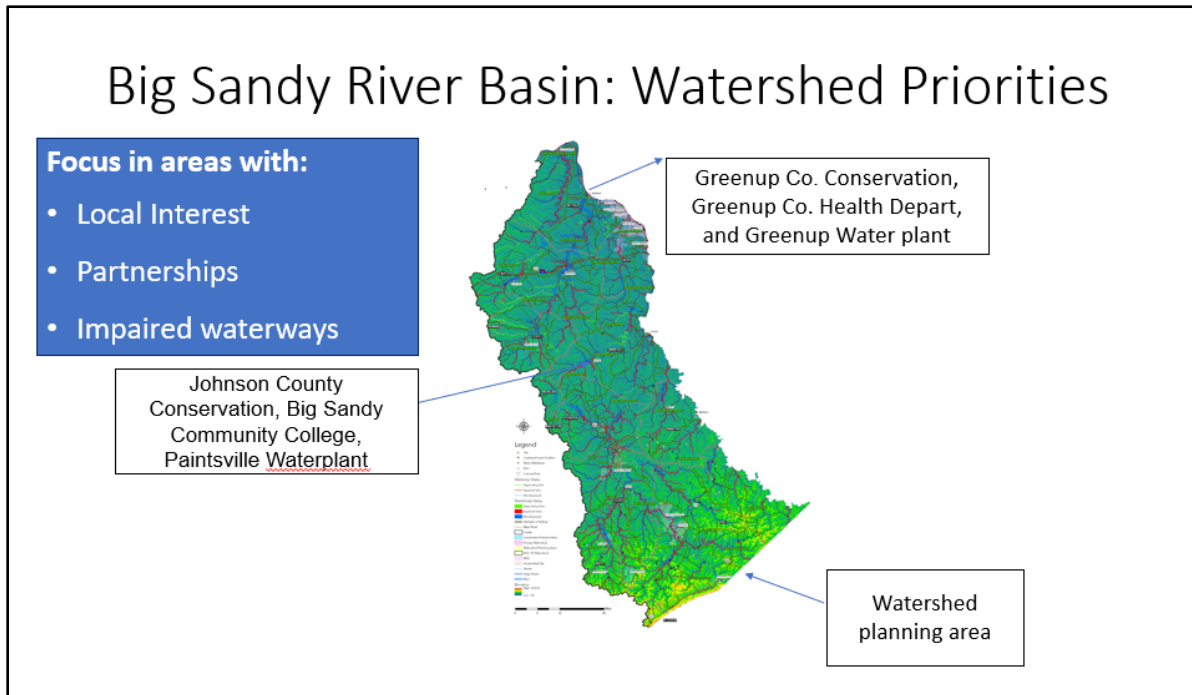


## **Basin Status Report Summary: Big Sandy River Basin**

*During the Forum, a representative from each of Kentucky's seven major river basins provided insights about current focus areas, challenges, and needs and opportunities. Rodney Bruce provided the Big Sandy River Basin report.*



### **Watershed Challenges:**

- Trash in streams
- Mining impacts, including acid mine runoff
- Sewage straight pipes
- Apathy of basin residents

### **Big Sandy River Basin Successes:**

- Big Sandy River Watershed Watch – 37 active volunteers testing 48 sites in 10 counties
- Paintsville Lake Cleanup with new volunteers
- National media attention about region's water quality issues

### **Needs:**

- Hiring of Big Sandy River Basin Coordinator
- Increased funding for Watershed Watch lab analysis and sampler training workshops
- Funding to remediate mining impacts to water quality
- Active engagement with Farm Bureau and Conservation Districts
- Regain institutional memory