

Helping under-resourced institutions increase NIH funding success and build research capacity.

SuRE
Resource
Center

GRANTSMANSHIP

Training, Guidance & Expertise

OVERVIEW

The Challenge: Institutions that teach students from backgrounds underrepresented in science often lack the resources to build a research environment on their campuses. As a result, the ability to support faculty research and provide racially diverse and low-income students access to biomedical careers becomes challenging.

The Solution: The National Institutes of Health (NIH) designed the **SuRE program** to help qualifying institutions on their path toward building and sustaining a research infrastructure. In partnership, the **SuRE Resource Center** provides free training, guidance, and expertise to help bridge the gap in taking those initial steps.

HOW WE HELP

Webinar
Training

Monthly trainings for faculty and Office of Sponsored Projects (OSP) staff

Bootcamp
Training

Online event prior to SuRE application deadlines

Biennial
Conference

Networking for national SuRE community

Consulting

Personal instruction from research experts

OSP
Seed Grant

Competitive funding to grow Office of Sponsored Projects (OSP)

On-Demand
Resources

Recorded training videos and downloadable content

WHO WE SUPPORT



FACULTY

Reduce the Learning Curve in Funding Your Research



RESEARCH ADMIN

Build an Environment That Supports Faculty Research



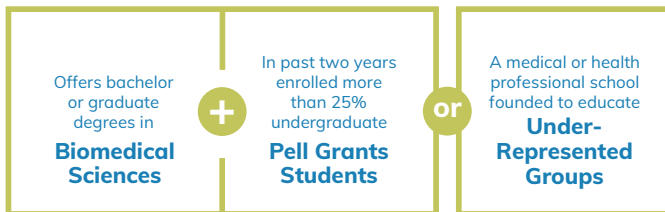
LEADERSHIP

Obtain NIH Research Grants & Recruit Promising Students

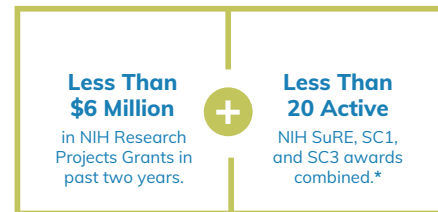
ELIGIBILITY

The NIH SuRE program is designed for institutions that meet specific institutional and funding criteria. These include awarding bachelor or graduate degrees in biomedical and behavioral sciences, enrolling significant numbers of students from backgrounds nationally underrepresented in biomedical research, and receiving limited NIH Research Project Grant funding. For questions about eligibility, visit our [FAQ page](#) or request a Regional Coordinator below.

1. Institutional Criteria



2. Funding Criteria



* Does not apply to SuRE-First

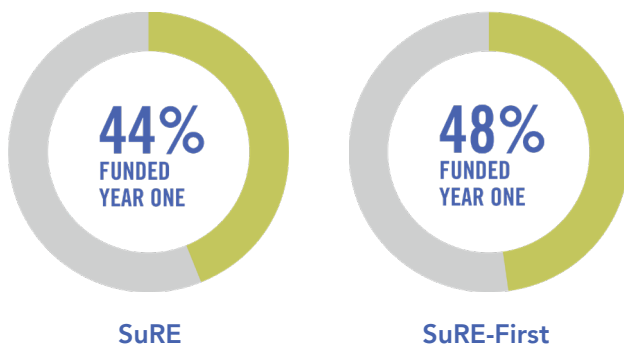
FUNDING MECHANISMS

The **SuRE R16** mechanism is for tenure-track (or equivalent) faculty with prior research experience not currently funded by an NIH RPG grant, with the exception of SCORE or SuRE grants. Those eligible for SuRE-First who do not want to commit six calendar months of effort may also apply. **SuRE-First R16** is for tenure-track (or equivalent) faculty without experience leading externally-funded, independent research.

REGIONAL COORDINATORS

Whether you're new to SuRE or familiar with the program and looking for advice, please feel free to contact one of our Regional Coordinators. They are here to answer your questions, provide guidance, and help you connect with the SuRE Resource Center team.

R16 Award Rates



WEST
Arica Lubin, PhD
University of California, Santa Barbara



MIDWEST
Esther Dupont-Versteegden, PhD
University of Kentucky



EAST
Brittany Smalls, PhD, MHA, University of Kentucky

[Request a Coordinator](#)

10.25.23

CONTACT US

Visit our website



Melissa Nickell
Program Administrator
SuRE.RC@uky.edu